



**Standardized application solutions  
customized to your needs**

The field-tested applications from the Robotunits Modular Automation System offer ingenious solutions for the simple optimization of your processes.



Discover applications  
<https://robotunits.com/en-us/applications/>

## Slat Top Conveyors



**The Robotunits Slat Top Conveyor:  
Efficient conveyor technology for complex layout designs**



**Outstanding Quality**



**Uncompromising Service**



**Fastest Delivery Times**

# Slat Top Conveyors

Reliable, flexible and efficient

Discover the flexible and reliable solution for transporting materials over longer distances: Our Slat Top Conveyors are designed for complex layouts with multiple curves, making them ideal for industries such as packaging, logistics, food processing, waste management, and automotive manufacturing.

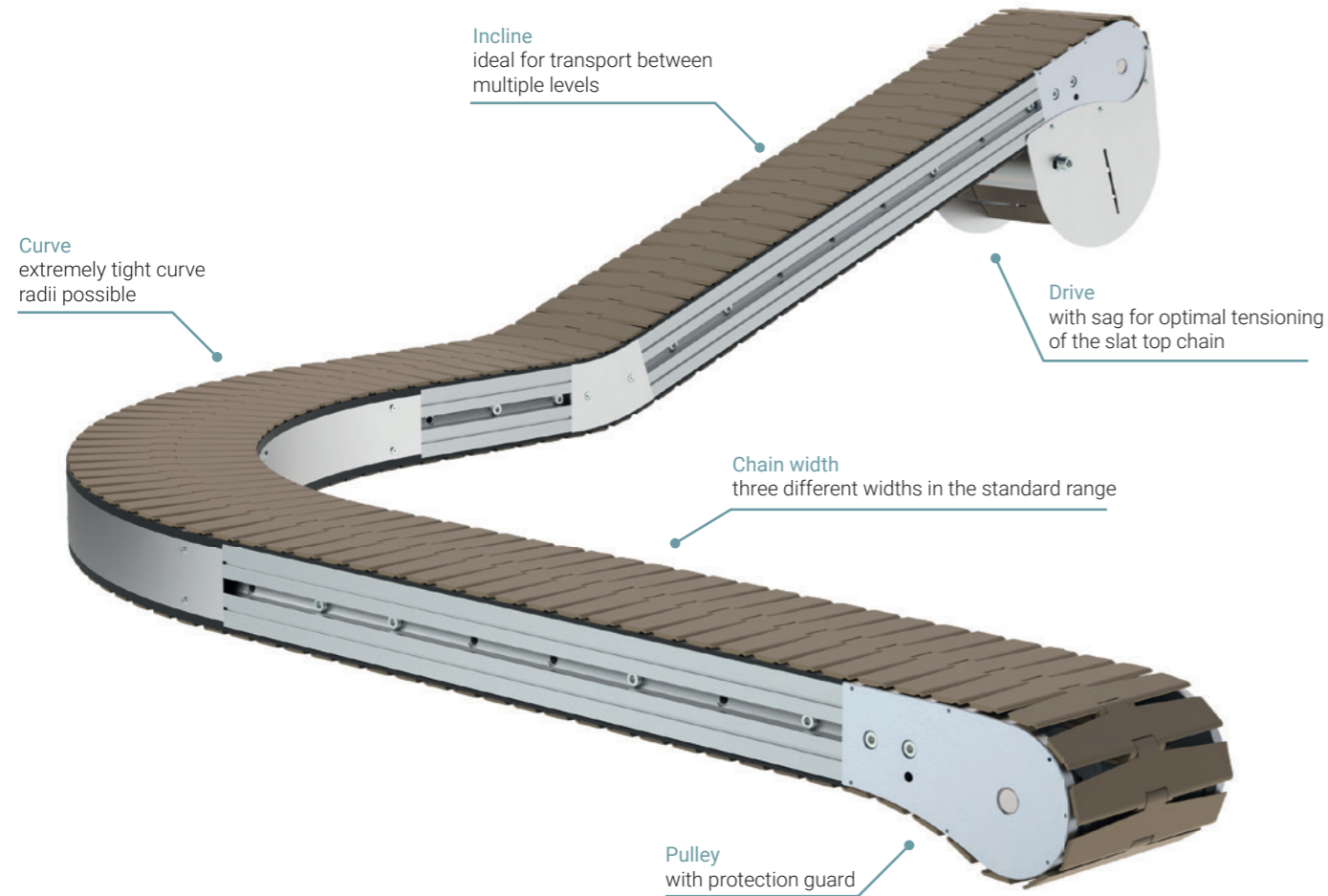
## Facts

- Compact conveyor technology with extremely tight curve radii
- Long distances with just one drive unit
- The pulley is flush with the frame

Engineered for efficiency, durability, and minimal maintenance, these conveyors integrate seamlessly into your production and logistics systems. Their robust construction and versatile design ensure smooth workflows, greater productivity, and sustainable process optimization across a wide range of applications.

## Benefits

- Optimal customization for spatial and material flow conditions
- Energy efficiency
- Easy transfer of products



## Technical data

Frame width:	87 mm, 124 mm, 195 mm
Chain width:	82.6 mm, 114.3 mm, 190.5 mm
Min. curve radius:	Chain width 82.6 mm = 200 mm Chain width 114.3 mm = 200 mm Chain width 190.5 mm = 610 mm
Speed:	5 m/min to 30 m/min

Max. conveyor length: approx. 15,000 mm \*  
Max. conveyor load: approx. 150 kg \*  
\* depending on the conveyor layout

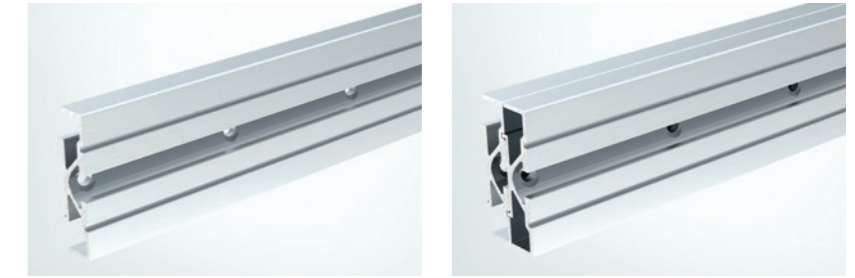
Alternative widths and speeds available upon request.

# Slat Top Conveyors

Design and drive options

## Special extrusion:

- Mounting options for sensors, side guides and stands



## Drive:

- 230/400 V motor
- Chain sag for optimal tensioning of the slat top chain

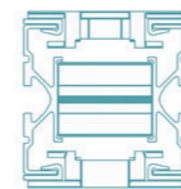
## Pulley:

- Special pulley for optimal movement of the slat top chain
- Flush with the frame

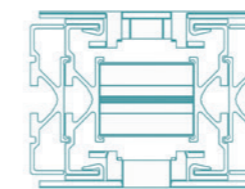


## Three frame widths

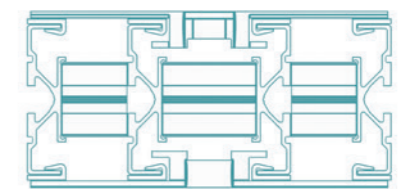
- The optimal frame width for every application, depending on the weight, speed, incline, conveyor layout, etc.



Frame width 87 mm



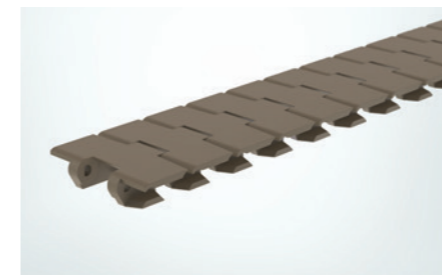
Frame width 124 mm



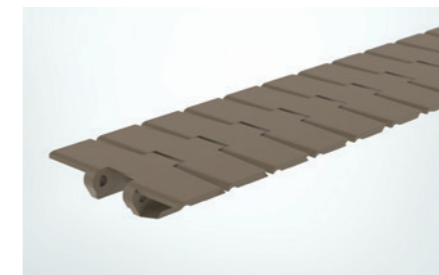
Frame width 195 mm

## Slat top chain:

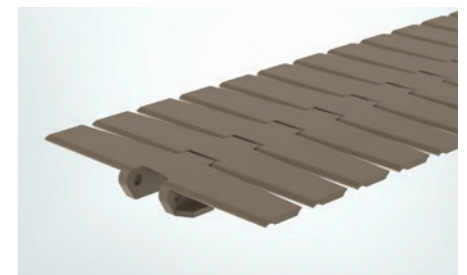
- Various chain widths
- Extremely tight curve radii possible
- Chain links are individually interchangeable



Chain width 82.6 mm | curve radius 200 mm



Chain width 114.3 mm | curve radius 200 mm



Chain width 190.5 mm | curve radius 610 mm

## Turnkey Conveyor Solutions

Our Slat Top Conveyors are extremely versatile: they can be used in both indexing and accumulation operation or in other turnkey solutions that have already proven successful for our belt, modular belt and timing belt conveyors.

This enables us to offer you customized solutions for a wide range of conveying requirements and to provide you with efficient and versatile conveyor technology that is tailored to your individual requirements.